



**CITY OF SANTA BARBARA
HISTORIC LANDMARKS COMMISSION**

**RESOLUTION RECOMMENDING THAT CITY COUNCIL
DESIGNATE AS A CITY LANDMARK
THE SANTA BARBARA CLUB AT
1105 CHAPALA STREET, SANTA BARBARA, CALIFORNIA
APN 039-222-024
RESOLUTION 2014-1**

MARCH 26, 2014

WHEREAS, Section 22.22.050 of the Municipal Code of the City of Santa Barbara grants the Historic Landmarks Commission the authority to initiate a designation process to recommend to the City Council the designation as a City Landmark of any structure, natural feature, site or area having historic, architectural, archaeological, cultural or aesthetic significance; and

WHEREAS, on January 21, 2014, the property owner, Santa Barbara Club, sent a letter supporting the City Landmark designation; and

WHEREAS, on February 12, 2014, the Historic Landmarks Commission adopted Resolution of Intention 2014-2 to hold a public hearing to consider a recommendation to City Council for designation of the Santa Barbara Club located at 1105 Chapala Street as a City Landmark; and

WHEREAS, the historic research found in the Post Hazeltine Associates on March 18, 2014 and in the Staff Report, found the structure at 1105 Chapala Street, designed by the noted architect Francis W. Wilson in 1904 in the Neoclassical style, significant for its historical and architectural influence on the heritage of the City; and

WHEREAS, the proposed boundary of the City Landmark designation includes the two story building constructed in 1904, the one-story brick building on Chapala (c. 1904-1907), the plastered wall and piers on Chapala (c. 1904-1906), and the sandstone retaining walls along Figueroa Street as per exhibits A and B; and

WHEREAS, under the provisions of Article 19, Section 15308 of the California Environmental Quality Act Guidelines and the City List of Activities Determined to Qualify for a Categorical Exemption (City council Resolution Dated November 10, 1998), staff has determined that designation of the Santa Barbara Club as a City Landmark is eligible for a Categorical Exemption; and

WHEREAS, Section 22.22.050 of the Municipal Code of the City of Santa Barbara states that the City Council may designate as a Landmark any structure, natural feature, site or area having historic, architectural, archeological, cultural, or aesthetic significance by adopting a resolution of designation within 90 days following receipt of a recommendation from the Historic Landmarks Commission, and;

WHEREAS, in summary, the Historic Landmarks Commission finds that the Santa Barbara Club at 1105 Chapala Street, Assessor's Parcel No. 039-222-024, meets the following City Landmark criteria (A through K) listed in section 22.22.040 of the Municipal Code:

- A. Its character, interest or value as a significant part of the heritage of the City, the State or the Nation;
- C. Its identification with a person or persons who significantly contributed to the culture and development of the City, the State, or the Nation;
- D. Its exemplification of a particular architectural style or way of life important to the City, the State, or the Nation;
- E. Its exemplification of the best remaining architectural type in a neighborhood.
- F. Its identification as the creation, design, or work of a person or persons whose effort significantly influenced the heritage of the City, the State, or the Nation;
- G. Its embodiment of elements demonstrating outstanding attention to architectural design, detail, materials and craftsmanship;
- I. Its unique location or singular physical characteristic representing an established and familiar visual feature of a neighborhood;

NOW, THEREFORE, BE IT RESOLVED that on March 26, 2014, the Historic Landmarks Commission of the City of Santa Barbara hereby recommends to the City Council that it designate the Santa Barbara Club located at 1105 Chapala Street, Assessor's Parcel No. 039-222-024, as a City Landmark and makes findings based on the historic and cultural significance of facts presented in the Staff Report.

**CITY OF SANTA BARBARA
HISTORIC LANDMARKS COMMISSION**

Adopted: March 26, 2014

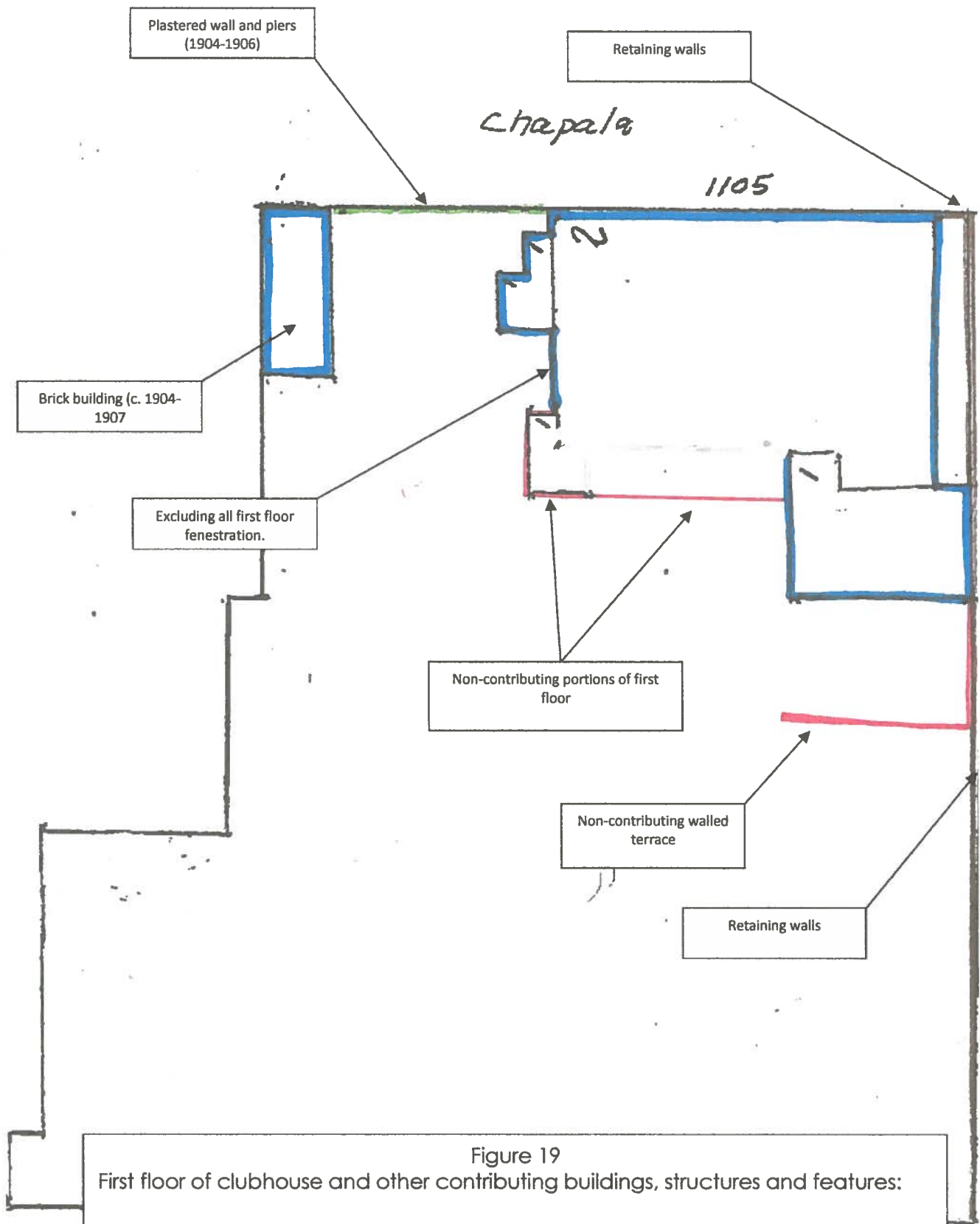
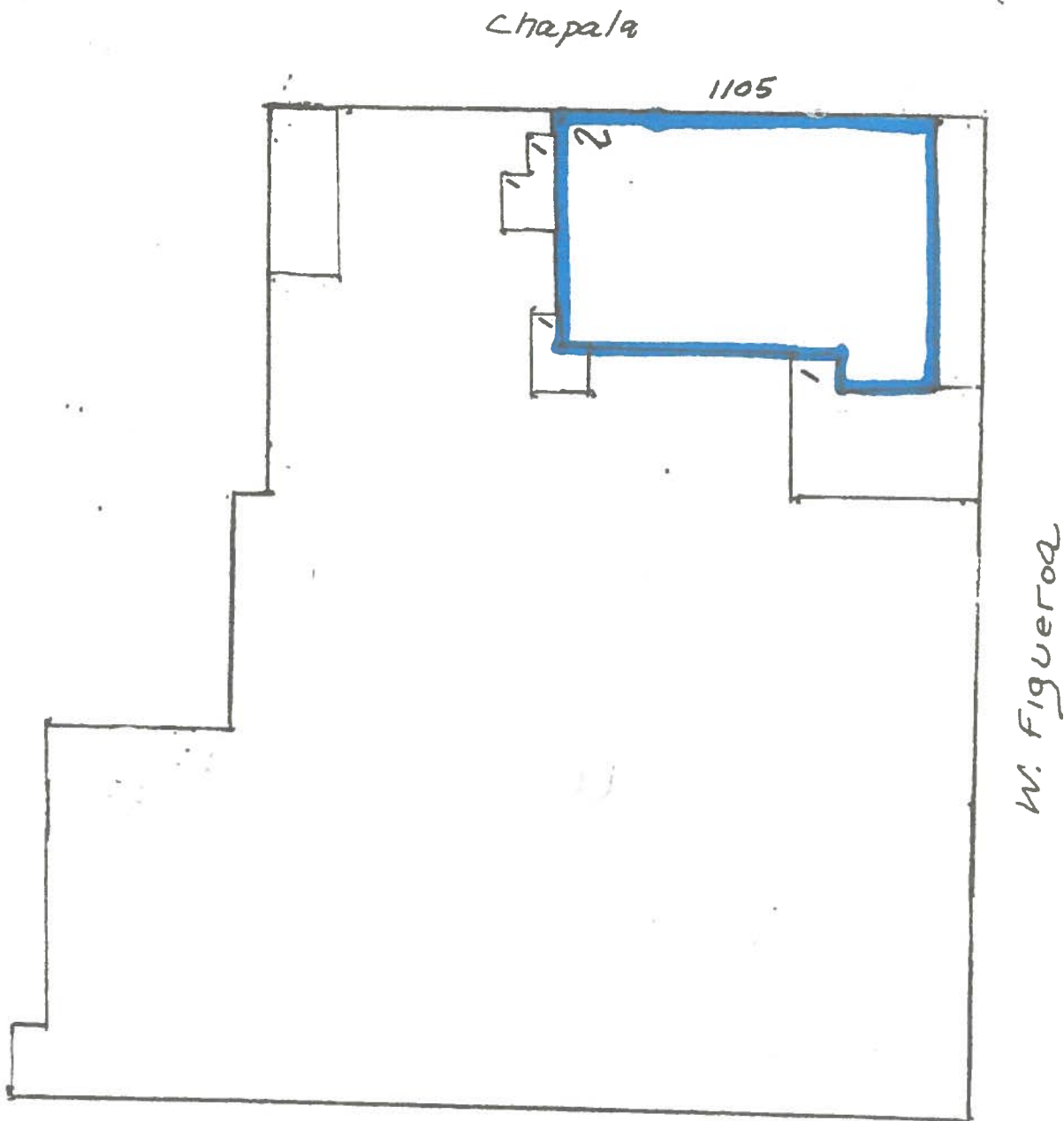


Figure 19
First floor of clubhouse and other contributing buildings, structures and features:
Red= non-contributing
Blue= contributing
Green= plastered wall and piers (contributing)
Brown= sandstone retaining walls
(please note that first floor fenestration of kitchen is non-contributing)



Second floor of clubhouse
Blue= contributing

Figure 20